

Anti-Cynomolgus_CCR8 hlgG1 Antibody (TPP-21360)

Product information

GM-47423AB-10	10 µg
GM-47423AB-100	100 µg
GM-47423AB-1000	1 mg

Antibody Information

Species Reactivity	Cynomolgus
Clone	TPP-21360
Source/Isotype	Monoclonal Human IgG1 /k
Application	Flow Cytometry
Specificity	Detects CCR8
Gene	CCR8
Other Names	CY6; TER1; CCR-8; CKRL1; CDw1 98; CMKBR8; GPRCY6; CMKBRL2; CC-CKR-8
Gene ID	102132857
Background	CCR8, also known as ChemR1, TER1, and CKR-L1, belongs to the beta chemokine receptor family. It is predicted to be a seven transmembrane protein similar to G protein-coupled receptors. CCR8 is expressed on some subsets of T cells, monocytes, macrophages, eosinophils, thymocytes, Langerhans cells, neurons, and vascular smooth muscle cells. Binding with its ligand CCL1, CCR8 plays a role in the regulation of monocyte chemotaxis and thymic cell apoptosis. It has been reported that CCR8 is also a receptor for CCL18. CCR8 is also believed to be an alternative coreceptor to CD4 for HIV-1 infection.
Storage	Store at 2-8°C short term (1-2 weeks). Store at ≤ -20°C long term. Avoid repeated freeze-thaw.
Formulation	Phosphate-buffered solution, pH 7.2.
Endotoxin	< 1 EU/mg, determined by LAL gel clotting assay

Data Examples

Flow cytometry

The recommended usage range is 0.5-4 μg per test. Cynomolgus_CCR8 CHO-K1 Cell Line (Catalog # GM-C15476) was stained with Anti-Cynomolgus_CCR8 hIgG1 Antibody(Catalog # GM-47423AB) or isotype control antibody, followed by anti-Human IgG APC-conjugated Secondary Antibody.

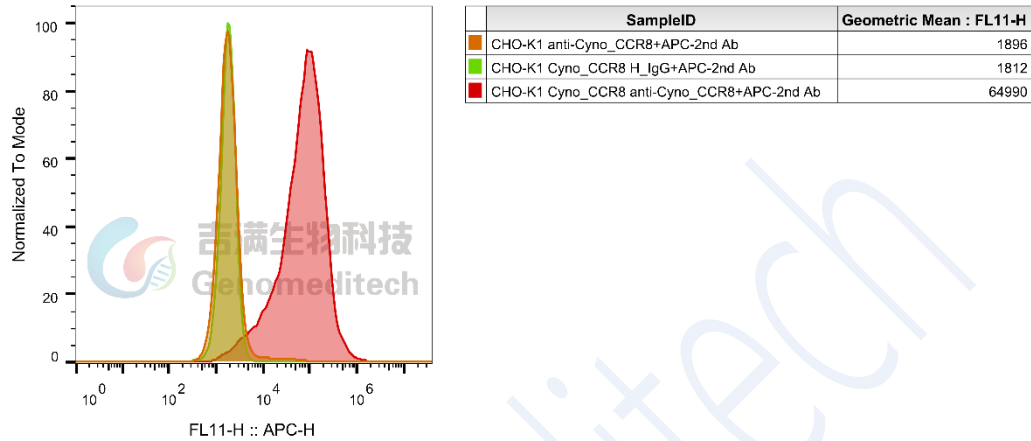


Fig 1. FACS